

# Menindee Central School

## Minintitja Parlku



connected communities  
link up and learn

JULY 2018 TERM 3 WEEK 2

Because of her...I can





# Principal's News



Thanks and well done to Telicia, Sarah and Kade who were guest speakers at Killara High School's NAIDOC assembly, (consisting of over 1300 people) in the last week of school last term. The students and Daniel presented on our school and the importance of NAIDOC week. Kade and Telicia spoke about their Aboriginal culture and Sarah talked about her Aboriginal sisters and the importance of learning about other cultures. This is another example of how Menindee staff, students and community take on the lead role.

In addition, next week Fiula, Abby, Albert, Chloe, Tyson and Kiara will travel to Sydney with Danielle Hunt and Brad Amos to take part in the Game Changer Challenge. The Challenge will take place over three days connecting 16 teams from across NSW with leading mentors from the education technology and creative industries to solve the big question: How can tomorrow's school help create the future? Across the three days, students will participate in activities to energise and inspire them to think creatively, concluding with teams pitching their solutions to an expert judging panel. Thanks to Danielle for entering the MCS team and organising the trip. Good luck Team Menindee!

Today your child will be coming home with a permission note to be part of a dental screening with Maari Ma. If you would like your child to participate, please complete the permission note and return it to school by next week.

*Fiona*



Paakantyi words of the week

Manhumanti parrityimpa  
'You went to get food'



*Front Office Buzz*

**FRONT OFFICE** Mon-Fri 8:00 am to 3:15pm  
 Phone: 80914 409 Fax: 80914 377  
 Email: [menindee-c.school@det.nsw.edu.au](mailto:menindee-c.school@det.nsw.edu.au)  
 Uniform Shop: Mon-Wed 8:30 –12:00



*School Starts @ 9:00am*

## Dates to remember July / August

| Every Thursday           | School Banking (info from FO)        |
|--------------------------|--------------------------------------|
| <b>AUGUST</b>            |                                      |
| Monday 6th-Thursday 9th  | Game Changer Challenge (Sydney)      |
| Thursday 9th-Friday 10th | Year 7-10 Camping Trip               |
| Thursday 16th            | Year 11 Primary Industries Excursion |



**SCHOOL  
UNIFORMS**

**OPEN Mon - Wed 8:30 - 12:00**

**Shirts \$35.00**

**Caps/Bucket Hats \$15.00**

**Winter Jackets & Jumpers \$60.00 each**

**LAYBY**

**Cash only please  
No EFTPOS**

### Contact Details:

**Have your contact details changed? Have your emergency contacts changed?**

Please inform the office if they have. It is of vital importance we have the correct information in case of an emergency.

**Absences:** If your child is absent please remember to contact the Front Office staff.

Courtesy calls will be made to you if we have not heard from a parent or carer by 10:00am.



# REMEMBER

## EVERY DAY COUNTS....

**A day here or there doesn't seem like much, but...**

| When your child misses just... | that equals...    | which is...       | and therefore, from Kindy to Year 12, that is... | This means that the best your child can achieve is... |
|--------------------------------|-------------------|-------------------|--|---|
| 1 day each fortnight           | 20 days per year  | 4 weeks per year  | Nearly 1 ½ a years of school                     | Equal to finishing Year 11                            |
| 1 day a week                   | 40 days per year  | 8 weeks per year  | Over 2 ½ years of school                         | Equal to finishing Year 10                            |
| 2 days a week                  | 80 days per year  | 16 weeks per year | Over 5 years of learning                         | Equal to finishing Year 7                             |
| 3 days a week                  | 120 days per year | 24 weeks per year | Nearly 8 years of learning                       | Equal to finishing Year 4                             |

*Give your child every chance to succeed...*

**Every day counts!**



## School Banking



Register for school banking, (every Thursday) and receive a welcome gift.

Bank regularly for the whole term and receive a free gift.

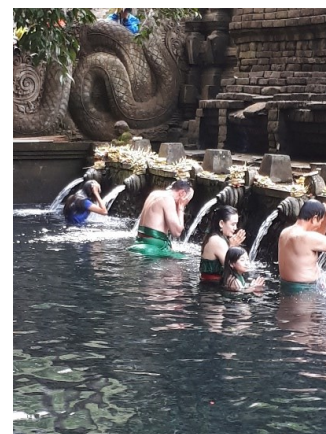
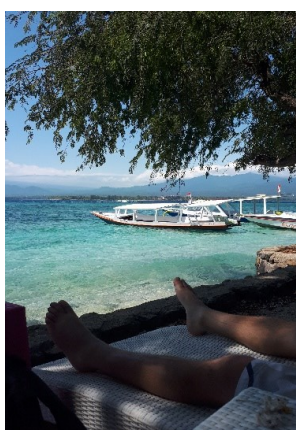
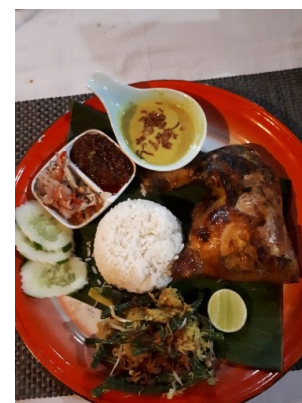


### Bali and Lombok

Twelve days in Bali and Lombok. What an experience. The food was fantastic. The people were very friendly and helpful.

My husband Damien and I visited a Water Temple Ulu Watu, attended a cultural dance, snorkelled and dove on Gili Air Island just to name a few.

We hired a driver named Krishna to take us around the island of Bali. He was a very fast driver. Here are some snaps from our trip. Mrs Browning.





# Weekend Performing Arts Program

## REHEARSALS

Sundays 11:30 Students - 12:30 Choir

Contact William Mafi - 0487 254 542

## Vocal

**Class is  
Cancelled  
today**

To attend vocal group rehearsals you must returned the signed permission note by 3<sup>rd</sup> of August.

Students who did not do an audition will be required to do one Lunch time Monday week 2, 30<sup>th</sup> of July.

Vocal Group will be every Tuesday from 3-4pm beginning in Week 2 (31<sup>st</sup> of July).

Any questions feel free to contact Miss Crouch at the school

## Netball Training

All female secondary students that are interested in attending the Netball Gala Day in Bourke on August 21<sup>st</sup> to August 23<sup>rd</sup> are invited to attend Netball training sessions with Mrs Browning.

Where: School COLA

When: Every Tuesday afternoon from 3-4pm.

Who: All female secondary students

Any questions regarding training please don't hesitate to contact the school.



**4<sup>TH</sup> AUGUST**

**SNAICC**

**CELEBRATING**  
OUR CHILDREN FOR **30** YEARS



**NATIONAL ABORIGINAL AND TORRES STRAIT ISLANDER**

**CHILDREN'S DAY**

**Little Kids and book is celebrating this on Thursday 2<sup>nd</sup> August in the Burke and Wills park  
10:30am-12.30pm.**

**Bus run is available for pick ups and drop offs.**

*Our children are the youngest people from the longest living culture in the world, with rich traditions, lore and customs that have been passed down from generation to generation. Our children are growing up strong with connection to family, community and country. Our children are the centre of our families and the heart of our communities. They are our future and the carriers of our story.*

**This is a great opportunity for our community to help us celebrate such an important day.  
You're welcome to join us in park!**



# COMMUNITY NEWS

**Menindee Charities-Lucky ball numbers: 3-8-12-14-15-16-  
Date: 30/7/18 Jackpot: \$ 761.00 Numbers: 1-20 Winners: Nil**



## Menindee Charities Annual General Meeting

1pm Monday 20th August 2018 at the Op Shop. \$2 membership due.  
New members and volunteers welcome.

## Menindee Regional Tourist Association Annual General Meeting

7pm Tuesday 21st August, venue TBA. Memberships due - business \$50, individual \$10. Nomination forms for committee positions available at the Information Centre and to be received no later than Tuesday 14th August addressed to: CONFIDENTIAL The Secretary MRTA PO Box 208 MENINDEE NSW 2879. If there are no nominations received for positions, nominations will be accepted at the AGM.

## liveBetter Community Services

### **LiveBetter Community Services**

LiveBetter provides a range of support services designed to assist people to stay at home for longer in the Broken Hill and Menindee areas.

If you or someone you know is ageing or has a disability and is struggling with daily tasks, LiveBetter may be able to assist by providing information and guidance on the services you need.

We can also help you navigate the My Aged Care process and/or help you get the most out of your NDIS plan.

For more information, call the Broken Hill office on **(08) 8082 9000**, and ask for Melody or Cindy or call **1800 580 580**.

Office hours are between 8.30am – 4.30pm Monday to Friday.

*LiveBetter - Enabling the people of regional Australia to live their best lives*

Visit [www.livebetter.org.au](http://www.livebetter.org.au) or like us on Facebook

Registered NDIS and Aged Care Provider





Menindee for the 13<sup>th</sup> August

Course : 166-54502V02 Statement of Attainment in Hospitality Essentials

Date : 13<sup>th</sup> August 2018 -17<sup>th</sup> August 2018

Time- 9am-4pm

Units : 5 units includes RSA & RCG ,Hygiene, Prepare & serve non-alcoholic beverages and Prepare & serve coffee

Venue : Menindee Campus

Cost \$100 paid prior to class

What to bring :pen & Paper

Course : 166-54534V02 Statement of Attainment in Hospitality Legal Essentials

Units : 2 units RSA & RCG

Date :16<sup>th</sup> August- 17<sup>th</sup> August 2018

Time 8:45am am-4pm

# STATEMENT OF ATTAINMENT IN HOSPITALITY ESSENTIALS

**Course:** Statement of Attainment in Hospitality Essentials  
**Course Duration :** 1 Week  
**Course Code:** 166-54502V02

- 2018 TOURISM & HOSPITALITY WEST DATES
- DUBBO: 30 JULY- 3 AUGUST
- 5 NOVEMBER-9 NOVEMBER
- 19 NOVEMBER-23 NOVEMBER
- 3 DECEMBER-7 DECEMBER
- MUDGEE: 6 - 10 AUGUST
- 12 NOVEMBER- 16 NOVEMBER
- 26 NOVEMBER-30 NOVEMBER
- WELLINGTON 13-17 AUGUST
- COBAR 20 AUGUST -24 AUGUST
- COONAMBLE 17-21 SEPTEMBER
- DUNEDOO: 24-28 SEPTEMBER
- GILGANDRA: 27-31 AUGUST
- WARREN: 3-7 SEPTEMBER
- NYNGAN: 10-14 SEPTEMBER
- BROKEN HILL: 30 JULY-3 AUG
- 19 NOVEMBER-23 NOVEMBER
- 26 NOVEMBER -30 NOVEMBER
- MENINDEE: 13 AUGUST- 17 AUGUST
- WILCANNIA: 20-24 AUGUST

## COURSE SNAPSHOT

**Location:** TAFE West Dubbo College  
Myall Street Dubbo 2830 NSW

**Course:** Statement of Attainment in Hospitality Essentials

**Cost:** FREE \*Fully Government Subsidised Student training programs

**Note:** Mandatory Liquor & Gaming NSW Competency Card Fee \$100

**Information Session:** Dubbo TAFE College M Block 14 June 2018

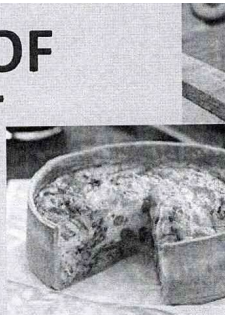
## CONTACT US TODAY!

**REGISTER YOUR INTEREST**  
or for more information

Phone: Sue Greer 0268833600  
Hotline 131 601  
Website: tafensw.edu.au  
Email: susan.greer@tafensw.edu.au

# MENINDEE TAFE

# STATEMENT OF ATTAINMENT IN KITCHEN ESSENTIALS



**Course:** Statement of Attainment in Kitchen Essentials  
**Course Duration :** Blended Delivery  
**Course Code:** 166-54533V02

## COURSE DESCRIPTION:

This course is targeted to equip individuals in hygiene practices and cleaning commercial kitchens, as well as preparing simple dishes and sandwiches.

## CORE & ELECTIVE UNITS:

The Statement of Attainment has the following core units:

- SITHFSA001 Use hygienic practices for food safety
- SITHKOP001 Clean kitchen premises and equipment
- SITHCCC002 Prepare and present simple dishes
- SITHCCC003 Prepare and present sandwiches

## SKILLS:

- FOOD HYGIENE
- CLEAN KITCHEN PREMISES
- PREPARING SANDWICHES
- PREPARING SIMPLE DISHES

# BE EMPLOYED IN HOSPITALITY

**Course:** Statement of Attainment in Hospitality Essentials  
**Course Duration :** 1 Week  
**Course Code:** 166-54502V02

## COURSE DESCRIPTION:

This course provides an introduction to the hospitality industry. Training is provided in practical skills to suit a range of hospitality establishments such as coffee shops, hotels clubs, restaurants.

## CORE & ELECTIVE UNITS

The Statement of Attainment has the following core units:

- SITHGAM001 Provide responsible gambling services
- SITHFAB002 Provide responsible service of alcohol
- SITHFAB005 Prepare and serve espresso coffee
- SITHFSA001 Use hygienic practices for food safety
- SITHFAB004 Prepare and serve non alcoholic beverages

## SKILLS:

- RESPONSIBLE CONDUCT OF GAMBLING
- RESPONSIBLE SERVICE OF ALCOHOL
- PREPARE & SERVE COFFEE
- FOOD HYGIENE
- NON-ALCOHOLIC BEVERAGES

## JOB OPPORTUNITIES:

- BAR ATTENDANT
- CAFÉ ATTENDANT
- FOOD AND BEVERAGE ATTENDANT

## COURSE SNAPSHOT

**Location:** TAFE West Dubbo College  
Myall Street Dubbo 2830 NSW

**Course:** Statement of Attainment in Hospitality Essentials

**Cost:** FREE \*Fully Government Subsidised Student training programs

**Note:** Mandatory Liquor & Gaming NSW Competency Card Fee \$100

## CONTACT US TODAY!

**REGISTER YOUR INTEREST**  
or for more information

Phone: Sue Greer 0268833600  
Hotline 131 601  
Website: tafensw.edu.au  
Email: susan.greer@tafensw.edu.au

**TAFE** NSW

RTO 90000. This document is correct at the time of printing: July 2017. \*Terms and conditions may apply.





**Robinson College – RTO 90449** is the High-Risk and Nationally accredited qualification specialist of choice for the local and Far West region of NSW.

Speak to the Administration Team about how you may be able to upskill your team, fully funded!

**You may even be eligible for subsidised training funded through the Department of Industry NSW- NSW Government. Even if you are working, you may still be eligible!**

**Current qualifications on offer:**

|          |   |
|----------|---|
| RII20115 | Certificate II in Resources and Infrastructure Work Preparation |
| AHC20416 | Certificate II in Horticulture                                  |
| AHC30716 | Certificate III in Horticulture                                 |
| BSB20115 | Certificate II in Business                                      |
| BSB30415 | Certificate III in Business Administration                      |
| CHC22015 | Certificate II in Community Services                            |
| CHC33015 | Certificate III in Individual Support                           |
| FSK20113 | Certificate II in Skills for Work & Vocational Pathways         |



**Short courses:**

|           |                                       |
|-----------|---------------------------------------|
| HLTAID001 | Provide Cardiopulmonary Resuscitation |
| HLTAID003 | Provide First Aid                     |
| HLTAID003 | Provide First Aid Refresher           |
| HSR/HSC   | Consultation Training                 |



**Minimum Age of 14 years:**

|             |  |
|-------------|--|
| CPCCVHS1001 | Prepare to Work Safely in the Construction Industry (White Card) |
|-------------|--|

**HIGH RISK TICKETS: Minimum Age of 18 years:**

|              |  |
|--------------|--|
| CPCCLDG3001A | Licence to Perform Dogging   |
| RIIMPO318E   | Conduct Civil Construction Skid Steer Loader Operations                                |
| RIIMPO320E   | Conduct Civil Construction Excavator Operations  |
| RIIMPO337D   | Conduct Articulated Haul Truck Operations  |
| RIIMPO338D   | Conduct Rigid Haul Truck Operations  |
| RIIWH5202D   | Enter and Work in Confined Spaces  |
| RIIWH5204D   | Work Safely at Heights   |
| TLILIC2001   | Licence to Operate a Forklift Truck  |
| TLILIC2005   | Licence to Operate a Boom-Type Elevating Work Platform (Boom Length 11 Meters or more) |
| TLILIC3003   | Licence to Operate a Non-Slewing Mobile Crane (greater than 3 tonnes capacity)         |
| TLILIC3008   | Licence to Operate a Slewing Mobile Crane (up to 20 tonnes)                            |
| TLILIC4009   | Licence to Operate a Slewing Mobile Crane (up to 60 tonnes)                            |



**Short courses in partnership with Allens Training – RTO 90909:**

|             |  |
|-------------|--|
| 22282VIC    | Course in the Management of Asthma Risks and Emergencies in the Workplace                            |
| 22300VIC    | Course in First Aid Management of Anaphylaxis  |
| HLTAID004   | Provide Emergency First Aid Response in an Education and Care Setting                                |
| HLTVHS005   | Conduct Manual Tasks Safely  |
| PUAVVER004B | Respond to Workplace Emergencies (Fire Warden)   |
| UEENEE101A  | Apply Occupational Health and Safety Regulations, Codes and Practices in the Workplace (Tag)         |
| UEENEE026A  | Conduct In-Service Safety Testing of Electrical Cord, Connected Equipment and Cord assemblies (Test) |
| UETDRRF06B  | Perform Rescue from a Live LV Panel (LVR)  |

**Fully Funded non -accredited programs:**

- Tech Savvy for Small Business
- Tech Savvy for Seniors

**If you would like more information or to enrol:**

Stop by Robinson College to enquire; or Email an expression of interest to [administration@robinsoncollege.nsw.edu.au](mailto:administration@robinsoncollege.nsw.edu.au) or Phone: (08) 8087 6022 for more information or Enrol online <https://robinsoncollege.nsw.edu.au/course-enrolment-search/> or keep up to date with our Facebook page <https://www.facebook.com/RobinsonEducationCentreLtd>

# Positions Vacant

## Community Care Worker

- Experience being able to make a difference in someone's daily life.
- Provide care and support our clients in a job where your own personality is valued.
- Casual opportunities available across the week, flexibility is an advantage

Seeking Community Care Workers for our HammondCare At Home service in Menindee, NSW.

HammondCare offers its staff competitive salaries, excellent training & development opportunities, a supportive environment and a fabulous benefits program. For more info check out our website: [www.hammond.com.au/careers](http://www.hammond.com.au/careers)

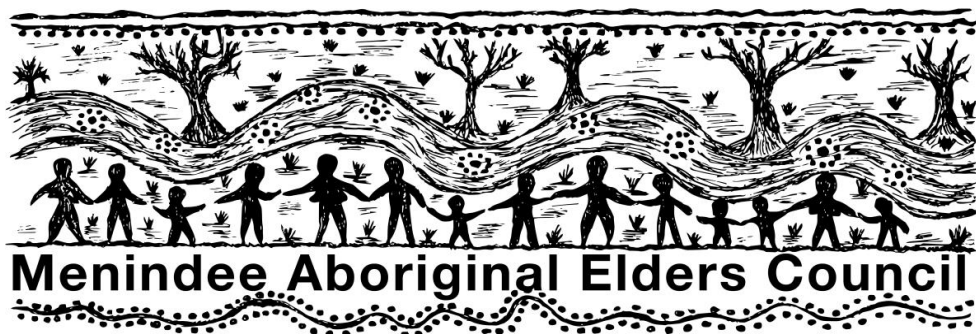
**Ready to make a change? Apply Now!**

For an information pack, including the selection criteria, and details on how to apply, please see our website: [www.hammond.com.au](http://www.hammond.com.au)

For any specific queries not answered by the information pack, please contact Jessica Madeley or Jessica Michailow, 1800 826 166

**Closing Date: 4 August 2018**

*All short listed applicants for these positions will be asked to consent to a criminal record check and pre-employment functional assessment.*



### EXPRESSION OF INTEREST MENINDEE ABORIGINAL ELDERS COUNCIL: SEEKING NEW MEMBER

The Menindee Aboriginal Elders Council is seeking expressions of interest from members of the local Aboriginal community to fill one (1) vacant Elder positions.

The successful Elder candidate will join the existing Council members to take part in the joint management of Kinchega National Park in conjunction with the NSW National Parks and Wildlife Service and are expected to attend a minimum of four meetings a year.

To apply, please write a letter of interest outlining:

1. Your cultural association to Kinchega NP and
2. Your interest in the position

Letters are to be sent to Gareth Telfer at the NSW National Parks and Wildlife Service, PO Box 788, 183 Argent St, Broken Hill or [Gareth.Telfer@environment.nsw.gov.au](mailto:Gareth.Telfer@environment.nsw.gov.au) by Friday 17 August 2018.

More information about joint management at Kinchega can be found at <http://www.nationalparks.nsw.gov.au/conservation-programs/kinchega-national-park-joint-management-program> or by contacting Gareth Telfer on 08 8080 3210.