

Menindee Central School

Minintitja Parlku



connected communities
link up and learn

November 2018

TERM 4

WEEK 7



SCHOOL SPEC TRIP

MCS out & about in SYDNEY



@ School Spectacular

Madam Tussauds





MCS Staff and Community members who travelled to Sydney visited Belmore Boys High School where they met Principal, Hala Ramadan, other Muslim and refugee mums.



Principals News

I'm glad to be back after a very busy but exciting week in Sydney. Last week I travelled to Sydney with a group of mums, nans and aunties to meet with mums from Belmore Boys High School. The Principal, Hala Ramadan, shared her journey from growing up in Lebanon to becoming the Principal at Belmore. Next we travelled with the Belmore mums to Gallipoli Mosque at Auburn, it was totally amazing! This was followed by a beautiful Lebanese banquet.

Other activities included an inner city Aboriginal Cultural tour, watching the School Spectacular show, going to Jamberoo Water Park and of course some retail therapy. The trip was deemed a success and we will definitely organise another one next year.

This Friday is the Big Day Out for the primary students. The students will go to the movies, have lunch in the park and then spend some time at the pool. This excursion is a reward for good attendance and positive behaviour.

Next week the 4/5/6 class will go on their excursion to Ballarat and Swan Hill, as part of their classroom study unit on Gold.

Until next week,

Fiona



MCS Year 2 Student, Kyloh with his medal haul from a recent Long Course Carnival—Spring in the Outback, State Qualifying meet 2018 in Broken Hill.

He picked up 1 gold and 3 silver medals.

Kyloh belongs to the BH Aquatic Stingrays Club.

His siblings Fiula & Shontaye also did well, breaking their own PBs at this same event.



CONGRATULATIONS!

Attendance Term 4 Week 6 85% 2018



Girls: 84% (overall)

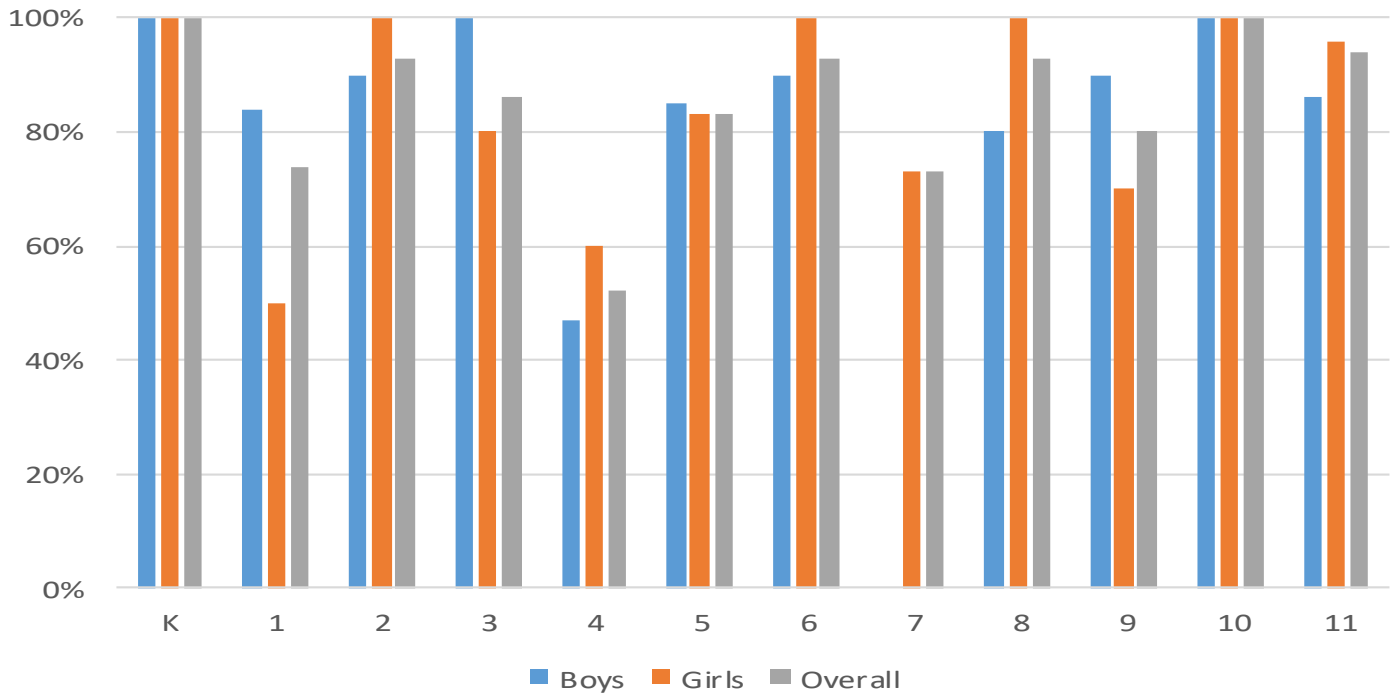
Boys: 87% (overall)

100% attendance

Kindy;

Girls: Years 2-6-8-10

Boys: Years 3-10



MCS PRESENTATION DAY

FRIDAY DECEMBER 14

11:30am

Followed by lunch



All Welcome



Front Office Buzz

FRONT OFFICE Mon-Fri 8:00 am to 3:15pm

Phone: 80914 409 Fax: 80914 377

Email: menindee-c.school@det.nsw.edu.au

Uniform Shop: Mon-Wed 8:30 –12:00



School Starts @ 9:00am

November-December

DATES TO REMEMBER

Every Thursday	School Banking (info from FO)
<u>NOVEMBER</u>	
Monday 26th-Friday 30th	Killara High School visit (Bus out Thurs pm and Friday)
Friday 30th	Primary - BIG DAY OUT
<u>DECEMBER</u>	
Monday 3rd-Friday 7th	Yrs 4,5,6 Swan Hill/Ballarat Excursion
Friday 14th	Presentation Day /Assembly 11:30 followed by Lunch Carols by Candlelight – School Oval from 7pm
Wednesday 19th	Last day of School for 2018
FEBRUARY 2019	SCHOOL STARTS TUESDAY 5TH

Primary Big Day Out
this Friday
 Bus leaves from MCS @ 8:00am

NO BUS

*The School bus will NOT be running
 this THURSDAY (PM) or FRIDAY*



PARENT News

Year 12 fundraiser

Car Wash

Wed 28th 3.30pm to 6pm.

At the station next to the community hall.

Cars \$10 outside + \$5 inside.



Donations are requested for small items for BINGO (up to \$10.00)
this Thursday 29th November at 6:30pm

*PARENT MEETING FOR O/S TRIP
WEDNESDAY 28th - 3:30 pm Connected Classroom*



Christmas BINGO

Date to be confirmed, Hampers, Lights etc
for donations please

COMMUNITY NEWS



Menindee Charities-Lucky ball numbers: 2-6-8-10-12-16

Date: 26/11/18 Jackpot: \$1,104.00 Numbers: 1-18 Winner: Nil



SUNSET STRIP PROGRESS
ASSOCIATION INC. (9895710)
PO BOX 7712
SUNSET STRIP
NEW SOUTH WALES 2879

COMMUNITY NOTICE

SUNSET STRIP VILLAGE – COMING EVENTS

The Sunset Strip Progress Association Inc. wishes to advise the Sunset Strip Community of the following coming events.

Saturday – 1st December at 6pm – Christmas Party.

All Sunset Strip residents are invited to the Community Christmas Party on Saturday 1st December starting at 6pm.

Saturday 8th December – Sunset Strip Sport & Recreation Group – Christmas Party.

Sunset Strip Sport & Recreation Group will hold their Christmas Party on Saturday 8th December.

ABN: 47976025521

CHARITY NO: CFN/22062



BE AMBITIOUS

BE EMPLOYED IN BUSINESS

BSB20115 CII in Business
TAFE NSW Menindee
Enrol at anytime during the course

COURSE DESCRIPTION:

This course reflects a range of basic clerical skills that are useful as a pathway to further education.

THIS COURSE ALSO PROVIDES:

A range of learning resources will be provided and are also available at the TAFE NSW hub.

COURSE OUTCOMES INCLUDING:

- This qualification reflects the role of junior administrative positions who perform a range of mainly routine tasks, using limited practical skills and fundamental operational knowledge in a defined context. Individuals in these roles generally work under direct supervision. It also provides a pathway to further education including CIII Business and CIII Business Administration.

HOW TO GET INVOLVED:

Contact TAFE NSW on 131 601

COURSE SNAPSHOT

Location: TAFE NSW Menindee
9 Haverfield Street, Menindee
NSW 2879

Course: Certificate II in Business

Cost: Course fees are dependent on each student's individual circumstances.

Note: Class times are Tuesdays, 10am to 1pm. You will connect with your teacher using adobe connect which will be organised at the Menindee campus for you.

CONTACT US TODAY

 131 601  tafensw.edu.au/business-admin



TAFENSW

This document is correct at the time of printing: November 2018.
*Terms and conditions may apply.



RTO 90003



Following the announcement of the 2019 NAIDOC theme – *Voice. Treaty. Truth. Let's work together for a shared future* – the National NAIDOC Poster Competition is now open!

Talented Aboriginal and Torres Strait Islander artists from across Australia are invited to submit an artwork to represent what the 2019 theme - *Voice. Treaty. Truth. Let's work together for a shared future* - means to them.

The theme invites all Australians to walk with Aboriginal and Torres Strait Islander people in a movement of the nation for a better future.

The winning artist of this prestigious competition will have their artwork used as the 2019 National NAIDOC Poster - to be seen by thousands and celebrated across Australia as the centrepiece of NAIDOC Week 2019!

The winner will collect a \$10,000 cash prize and they and a friend will be invited as a VIP guest to attend the National NAIDOC Awards Ceremony in Canberra on Saturday 6 July 2019.

[Find out more how to enter.](#)

The Poster competition will close Monday 4 February 2019 at 5pm (AEDT).

NETBALL

TUESDAYS

Under the COLA

Nov 20 @ 6pm

Where: MCS
Competition runs
until
December 4 2018

See Mrs Browning
for further details

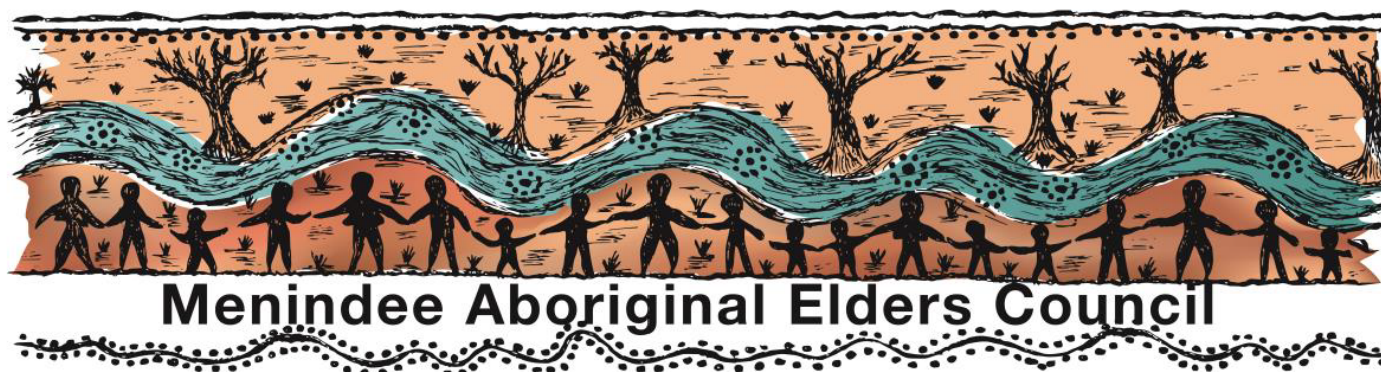
VOCAL GROUP

TUESDAYS

3pm - 4pm



Where: Music room



**EXPRESSION OF INTEREST
MENINDEE ABORIGINAL ELDERS COUNCIL:
SEEKING NEW MEMBER**

The Menindee Aboriginal Elders Council is seeking expressions of interest from members of the local Aboriginal community to fill one (1) vacant Elder positions.

The successful Elder candidate will join the existing Council members to take part in the joint management of Kinchega National Park in conjunction with the NSW National Parks and Wildlife Service and are expected to attend a minimum of four meetings a year.

To apply, please write a letter of interest outlining:

1. Your cultural association to Kinchega NP and
2. Your interest in the position

Letters are to be sent to Gareth Telfer at the NSW National Parks and Wildlife Service, PO Box 788, Broken Hill or Gareth.Telfer@environment.nsw.gov.au by Wednesday 12th December 2018.

More information about joint management at Kinchega can be found at <http://www.nationalparks.nsw.gov.au/conservation-programs/kinchega-national-park-joint-management-program> or by contacting Gareth Telfer on 08 8080 3210.

Our mission

Our passion is improving quality of life for people in need

Our motivation

The work of HammondCare is motivated by the Christian principles and values expressed in the words and deeds of Jesus Christ. HammondCare believes in the value of all people as made in the image of God and as loved by God. We are therefore called to show the same love, with compassion and respect, for people in need.

Our mission in action

We serve people with complex health or aged care needs, regardless of their circumstances.

How we serve others

Listening and relating

We listen to people and seek to understand their needs.

Enabling choice

With creativity and wisdom, we enable people to choose and to engage in life through activities they enjoy, find satisfying and from which they derive dignity and self-respect.

Tailoring care

We believe that providing excellent and responsive clinical care flows from knowing and understanding the person.

Belonging

We believe that feeling safe is crucial for people's well-being. We recognise the value of feeling in control and 'at home'.

Partnering with family and friends

We actively encourage family and friends to be our partners in care.

Engaging with community

We encourage people to be involved in their community and we will connect with the communities in which we serve.

Equity and access

We seek to serve the disadvantaged and those unable to care for themselves.

Nurturing the whole person

Our Christian motivation means that we nurture the spiritual well-being of people, as well as meeting their physical and emotional needs.

How we work together

Serving with passion

We only want staff and volunteers who enjoy serving others and demonstrate this in their behaviour and attitude.

Learning and developing

We build the knowledge and skills necessary to do our jobs well and develop satisfying careers. We all use what we learn.

Being creative and innovative

We seek to research, develop and improve care and services. We encourage creativity and innovation.

Communicating well

We communicate honestly, openly and in a timely manner.

Respecting confidentiality

We protect the privacy and confidentiality of those we serve and with whom we work.

Being wise with resources

We will manage resources effectively and sustainably.

Managing risks for better care

We manage risks in an intelligent and measured way rather than seeking to eliminate them.

Valuing teamwork and sharing responsibility

We respect and value each other, our different roles, and the diversity of team members. All staff members share responsibility for our services and work together to reach common goals.



HammondCare

An Independent Christian charity

AGED CARE • COMMUNITY CARE • HEALTH+HOSPITALS

Community Care Workers

- Do you want to make a meaningful impact on the lives of others?
- Work in a job where at the end of the day you can confidently say, "I made a difference"
- Casual opportunities available in Menindee

About HammondCare

HammondCare is an independent Christian charity that exists to improve quality of life for people in need.

We specialise in aged and dementia care, palliative care, rehabilitation, mental health services for older people, and other related health and aged care services. HammondCare seeks to embed evidence based best practice in its services and we provide these services through home care, sub-acute hospitals and residential aged care.

We are passionate about improving quality of life for people in need and are currently looking for people who share this passion. Our 'At Home' services are growing and we are seeking care workers who genuinely want to make a difference in older people's lives, by enabling our clients to maintain their sense of independence and wellbeing in their own home.

About the role

The role of the *Care Worker (HammondCare At Home)* works within the Mission and Mission in Action of HammondCare to deliver a range of "in-home" aged care services to clients who are in receipt of a home care package and/or other aged care services. The Care Worker works mostly alone in the clients' homes, but under the direct supervision of their Case Manager or service Manager. This role is expected to deliver outstanding levels of client service and to perform delegated duties to a high standard within the HammondCare Mission and Core Values so as to maximise client satisfaction.

The essence of this role:

- Deliver a range of 'in-home' and/or other aged care services according to the care requirements and care plans of each client.
- Enable each client to have the opportunity to succeed at the activities of daily living which promote dignity, self-respect and maintain the client's quality of life and abilities.
- Maintain and update care activities and client status in clients' notes and ensure completion of all documentation, while maintaining confidentiality.
- Abide by all HammondCare Workplace Health & Safety Policies and Procedures, including reporting of hazardous procedures and work areas and anything that has or might compromise the care of the client or the health of the staff member.

About you

- Commitment to engage and align with HammondCare's Christian Mission, Motivation and Mission in Action.
- No formal qualification necessary, however Certificate III Aged Care is an advantage.

- Experience and passion in providing personal care for elderly people and to care for those living with dementia.
- A current drivers licence and safe driving record. Willingness to travel between HammondCare's sites and from client to client homes throughout the shifts.
- Administrative and computer skills, including the usage of a smart phone.

HammondCare offers its staff competitive salaries, excellent training & development opportunities, a supportive environment and a fabulous benefits program. For more info check out our website: www.hammond.com.au/careers

Ready to make a change? Apply Now!

For an information pack, including the selection criteria, and details on how to apply, please see our website: www.hammond.com.au

For any specific queries not answered by the information pack, please contact Jessica Madley, 1800 826 166

Closing Date: 23 November 2018

All short listed applicants for these positions will be asked to consent to a criminal record check and pre-employment functional assessment.

Unfortunately the information pack is too large for our newsletter to publish so please contact direct to Hammond Care for the information. The MCS Newsletter Editor:

BEST & LESS

**WILL BE IN MENINDEE
TOWN HALL
2 DAYS ONLY**

**FRIDAY 30 NOVEMBER
10:am - 5:00pm
SATURDAY 1 DECEMBER
8:00am - 2:00pm**

***CREDIT CARD & ZIP PAY ACCEPTED
AFTER-PAY ALSO AVAILBLE***

Menindee Working Party

**Meeting
Wednesday November 28
1:00PM @ MCS
Contact Amanda King
for further details**

MENINDEE OVER 60s CHRISTMAS LUNCHEON



**MENINDEE CIVIC HALL SUPPER-ROOM
TUESDAY 4TH DECEMBER
Doors open 12 NOON seated by 12.30pm
Lunch: cold meats and salads, dessert
Entertainment
RSVP by Thursday 29TH November
to Noeline 0400005462 or Margot 0427437522**

A community initiative from Menindee Charities Inc and Central Darling Shire Council



CAROLS by CANDLELIGHT

Friday December 14

School Oval

Come along for a BBQ at 7:00pm

Santa arrives at 7:30pm

**Carols commence
8:00pm**